

quality doesn't come by chance



# Company Profile

## Who are we?

International Consulting & Services (ICS) is a construction and engineering company, offering consulting, building and management services. ICS was established in February 1999 in Beirut, Lebanon; since then, it has expanded its presence by establishing a major branch in KSA and forming regional offices with strategic partners in several international locations including USA, France, Japan and China. Its founding president possesses more than thirty years of diverse experience in the commercial, residential and construction sectors. His knowledge and enthusiasm extend to his loyal team of principals and employees who share a deep tradition of customer satisfaction. ICS's senior leadership and principals enjoy a combined wealth of experience in excess of 50 years in various construction related industries. To date, ICS has proudly served hundreds of satisfied customers and is widely recognized as a leader in the construction and engineering industry. We, at ICS, stand ready to serve you and to prove to you by the day how our company is an industry leader and why we are the perfect partner for you.

## What are our core commitments?

At ICS, we are committed to indefinite customer satisfaction; to achieve this we have set to ourselves a set of core commitments, which are the least you can expect from us:

- Highest standards: We are committed to adopt the highest standards from start to finish.
- Best practices: We commit ourselves to keep up-to-date with the best practices in the construction industry on both services and production levels.
- Utmost quality: We strongly believe that delivering quality is non-negotiable; it's our obligation to you; this is why our experts go above and beyond the basics to give much attention and meticulous care for each and every project we engage in.
- Top-class deliverables: Our wide portfolio and our returning customers have shaped our excellent reputation for top-class deliverables and we aim to build the same mutually beneficial relationship by delivering successful projects to you.



## Why our customers come first?

Our experts work alongside with you in every step of the way. We are here to understand you, communicate with you, and cater your needs throughout the entire project. Hence, our goal is to maximize the value and the quality to you at every step. As your partner of choice, ICS will make sure to meet the set targets and even exceed them.

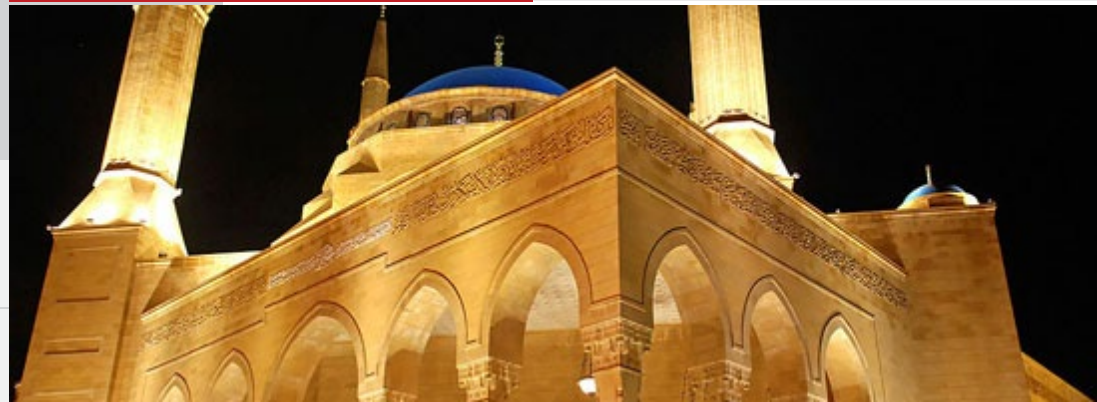
## How we capitalize on our working relationships?

We have strong relationships with the suppliers' chain, both subcontractors and vendors who are also involved in executing your project. We strive in bringing all working members to the same upper demanding level we have chosen and ensure that every contributor to your project is on the same wave length. Since 1999, we have been able to build solid teams of experts and knowledgeable subcontractors who share the same aim: Ensure quality and customer satisfaction. At the same time, we are able to offer a wide array of services and products to give you and your business the variety of services and works needed. At ICS, our skilled team of accomplished experts is highly qualified and always ready to make your dream become a reality.

## What services can we offer?

ICS delivers turnkey projects from initial concept to post-delivery management and also executes project legs and customized developments, which allows us to offer our customers a comprehensive range of consultancy and development services.

These include:



# Services

## Buildings Demolition Works

We perform buildings demolition on large and small projects with precision, safety and efficiency. We have an extensive demolition experience and have successfully completed many difficult and fast-paced projects safely and efficiently. At ICS, we have an extensive experience in residential and industrial as well as large and complicated projects for demanding customers. Some of our services include interior demolition, concrete demolition, site clearing and building wrecking.

## Excavation & Shoring Works

ICS has an extensive array of machinery and equipment suitable to complete any earth moving needs. All our machinery is kept in excellent condition ensuring safety and precision. ICS offers a diversity of excavation and shoring services, including excavation, trenching, potholing, footings and pier holes. Our technical experts are providing economical designs and execution solutions for diverse type of shoring and load bearing piles.

## Concrete Works

Concrete works have been our specialty. We have completed different types of grey structures at various locations and have achieved significant milestones. Our concrete solution team is highly productive and can attain high quality of concrete finishes regardless the nature and diversity of the structure.

## Renovation Works

Our history of performing renovation works has elevated us to an outstanding place in the market. We deal with all types of renovation works as well as expansion of projects (Royal Residential, commercial...) by providing our clients with the best possible economical solutions while maintaining our work excellence and making it our trade mark.

## Finishing Works

Architectural and finishing services are a big part of our business and field of expertise. We have proudly dealt some high profile clients and delivered them outstanding and remarkable royal finishing jobs with high quality and excellence. We have a large experience in the following types of finishing works:

- Installation works
- Carpentry
- lastering
- Decorative and plastering works
- Painting works
- Decorative and alfresco painting works
- Mosaic and tiling
- Stucco works
- Parquetry



# Facilities Management Services

At ICS, we have put in place an operations & maintenance program to keep the buildings in good conditions for the occupants wellbeing. Our services cover preventive, reactive and corrective maintenance which encompass not only technical issues, but also managerial, financial, and institutional issues, that aim towards to eliminate and reduce major constraints which prevent the achievement of sustainability.



## Infrastructure Works

For civil works and infrastructure, we focus on complex structures on land and water. Before the actual construction of roads and bridges, there is an intensive process of civil works development and engineering. In this process our professionals focus on the design, planning and construction. ICS has the capability to deal with the planning, design, construction, supervision and management of infrastructure projects including civil works with all utilities. Having both flexibility and experience, our infrastructure services can be swiftly deployed to meet specific needs. We are responsive, not only to needs, but to those of the wider community; adding to the awareness of project's economic, environmental and social impact. From engineers to site personnel, our good interpersonal skills and solid understanding of engineering theory make ICS the best choice to strengthen your projects.

## MEP Works

As a leader in the general contracting field, ICS strives to provide high MEP quality and superior customer service at a competitive cost while forming lasting relationships with clients and employees. ICS specialized in the execution of electro-mechanical works (HVAC, Plumbing, Electrical, BMS, smart systems, low current and Fire Fighting) in residential, public, industrial and commercial buildings, as well as heavy electrical and mechanical works in industrial complexes and factories.

## What is our Methodology?

At ICS, we have developed a phasic methodology that we apply on all our projects, either they are big or small. Depending on the customer's requirements, this methodology allows us to start and finish at any phase, as long as they are followed consecutively. ICS mobilizes our on-site staff of experienced and knowledgeable builders acting as the owner's eyes and ears and interacting closely with the project team throughout the process. These phases are:



## Our Methodology

### Phase 1: Project scheduling

ICS provides a system of schedule development and continual monitoring that enables flexibility and encourages communication. ICS's project schedules are highly accurate in projecting construction durations and thoroughly detailed in the amount of information we provide to the project team. Our historical data is combined with knowledge of the local contracting environment and our experience as creative builders and on-site commercial contractors. We implement principles of lean construction into our scheduling approach to make the process highly efficient, convening regular meetings between our project staff and subcontractors to ensure schedule compliance.

### Phase 2: Equipment and material procurement

During preconstruction, ICS identifies "long lead time" material and equipment purchases, working closely with the design team to develop a procurement strategy. ICS frequently procures major items of equipment prior to the start of construction as decided by the project team.

### Phase 3: Self-performance

ICS has a long history as a successful self-performing commercial general contractor. We're not just a "broker" of subcontractors—we are capable of performing the most critical work to drive the project schedule and set quality standards for the project.



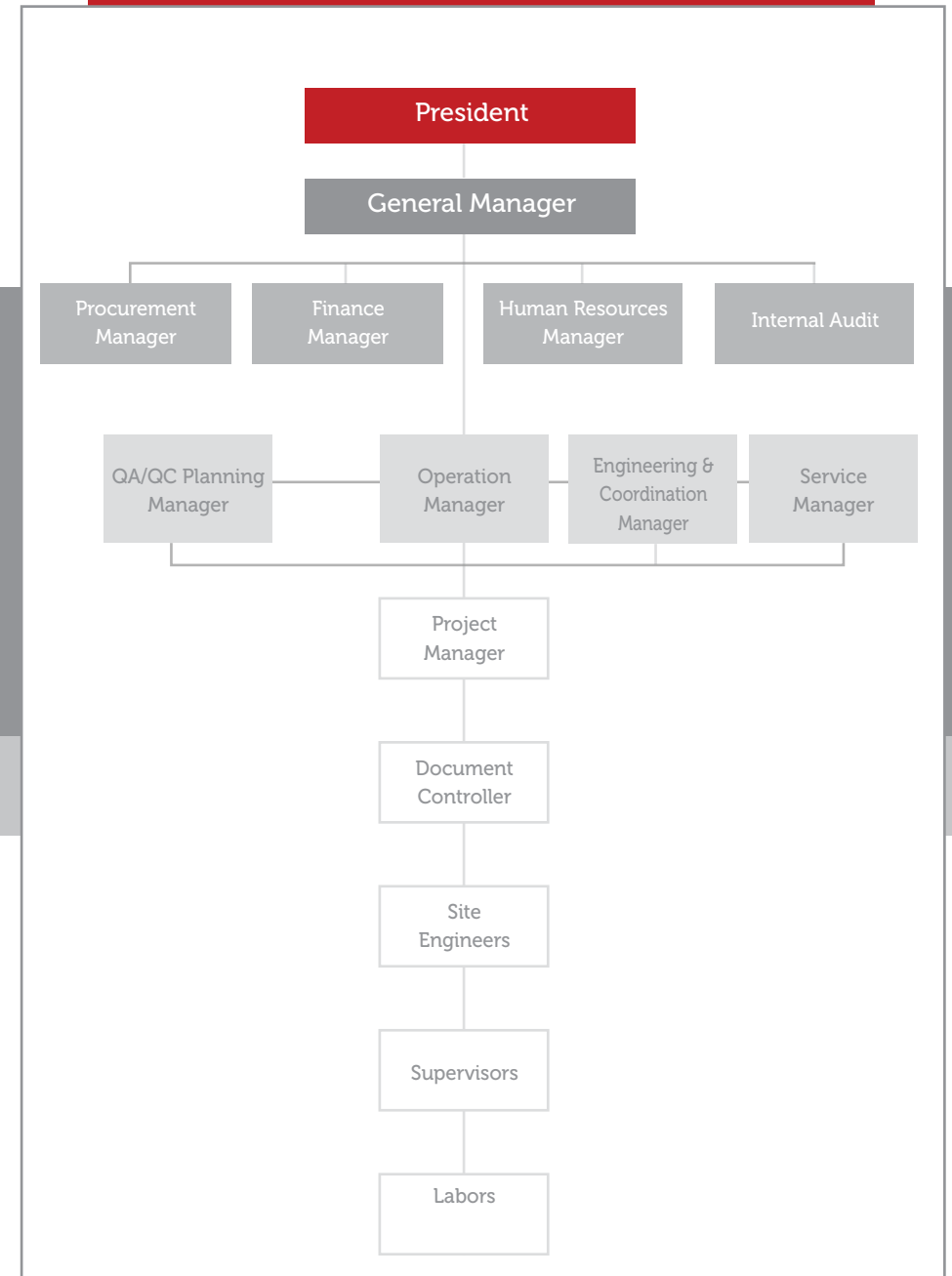


## Who is our team?

Our team is composed of experienced and well-trained engineers and technicians who perform every project with enthusiasm and attention to details.

Our aim is to reach the maximum customer satisfaction in everything we do.

Our team is structured as follows:



In Saudi Arabia:



## Information Technology and Communications Complex (ITCC)



Its area is 800,447 square meters, specially designed with its full buildings and facilities for the Information Technology and communications industry, and developing its various sectors. The IT and communications systems of the Complex depend on the next generation network (NGN), in which it uses internet protocols (IP), where all the technological services are passed through unified networks and highly accurate, smart systems that are run and controlled in high-ranked level information centers.

ICS scope of work carried out as per approved design, shop drawings, specification and within the time frame and progress of the construction program.

**Client:**

General Organization for Social insurance (GOSI)

**Location:**

Riyadh - Saudi Arabia



## King Saud University / Hospital



**Client:**

King Saud University

**Location:**

Riyadh - Saudi Arabia

The King Saud University Medical City (KSUMC) is a tertiary care hospital with proven years of experience in hospital operation and administration. The King Saud University Medical City has medical staff experts in various fields of specialization. This core of professionals is complemented by a human resource complement, engaged in allied medical, administrative and support services. KSUMC is accredited by the CAP, one of the world's most prestigious accrediting body for international health care organizations. In addition to scholarship and research, King Saud University provides health and social services to the entire Saudi community, as extending and expanding such services are an essential component of KSU's comprehensive development plans. King Saud University-Medical City Facilities

The KSUMC boasts its two major hospitals with state of the art facilities located in the central district of Riyadh and outside facilities/centers.



In Saudi Arabia:



## King Abdullah Petroleum Studies & Research Center (KAPSARC)



KAPSARC conducts independent research and develops insights in collaboration with leading international research centers, public policy organizations, and industrial and government institutions. The center is focused on finding solutions for the most effective and productive use of energy to enable economic and social progress in the region and across the globe. Composed of a network of three-dimensional six-sided cells, the project is based on the concept of connectivity. The center rises above the desert landscape, emerging as a cluster of crystalline forms which evolve in response to environmental conditions. The spatial program of the design ensures that each component is suited to the function it serves. The exterior's shell-like facades conceal the porous interior, where sheltered courtyards bring natural daylight into the center of the scheme. These buffer zones allow a gradual temperature transition between outdoor and indoor volumes.

Our scope of work covers supplying, installing, testing, commissioning & the hand over for complete lightning protection system.

**Client:**

Saudi Aramco

**Location:**

Riyadh - Saudi Arabia



## Aircraft Maintenance Hangars



Aircraft maintenance hangars are to develop detailed proposals for new light maintenance hangar facilities at King Khaled International Airport (KKIA) in Riyadh and King Abdul Aziz International Airport (KAIA) in Jeddah.

Our scope of the project covers the design and build of all MEP services for 8 aircraft maintenance hangars (divided between Riyadh and Jeddah), with an administration building, a closed carpark and aircraft parking aprons.

**Client:**

Saudi General Authority of Civil Aviation (GACA)

**Location:**

Riyadh - Saudi Arabia

In Saudi Arabia:



## Boeing Academy Training Center



Boeing Academy is a specialized national training center. Located in King Khaled International Airport, designed by the architectural firm HOK and Arabian Bechtel Company Limited served as the construction manager on behalf of the Saudi government.

As its privatization program progresses, the academy will be converted to a new status capable of offering wide-ranging training programs to the needs of the Kingdom.

Boeing Training Center offers complete facilities for aviation trainings in one place.

The scope of work covered the electro-mechanical works of the project.

**Client:**

National Technical Institute of Technology

**Location:**

Riyadh - Saudi Arabia



## Ibhar Saudi Food Factory (Al - Beik Fast Food)



Ibhar Saudi Food Factory is an industrial building provided by the highest MEP Systems and the latest technology methods of production.

The building consists of 7 floors with the height 30m and it's considered as the first for its kind in the first industrial city in Jeddah. The total plot area is around 6,100 m<sup>2</sup> and the built-up area is around 4,879 m<sup>2</sup>.

The scope of work covered the electro-mechanical works of the project.

**Client:**

Youseef Maroun - YMCO

**Location:**

Jeddah, Saudi Arabia

In Saudi Arabia:



## National Guard Mobile Hospital



Military Field Medicine is the arm of NGHA that provides direct medical assistance to military personnel in the military field during a national emergency in the required place.

Our NGMH prototype project included the design, build and execution of stationary of the mobile hospital included:

- Bed head units including EL control
- Medical farms including oxygen generators, vacuum and air compressors
- Full air and climate control
- Electrical installation, illumination and power supply
- HMI – Human Machine Interfacing
- High purity piping systems for laboratories
- Plumbing and piping for water supply and sewage

The scope of work covered the electro-mechanical works of the project.

**Client:**

Saudi Canadian for Contracting Est.

**Location:**

Riyadh - Saudi Arabia



## Princess Moudi Bint Khaled



In 2015, ICS was awarded the responsibility for the management of services in Princess Moudi bent Khaled All Saoud with 540.000 m<sup>2</sup> to ensure that our organization has the most suitable working environment for its employees and their activities.

The above refers to the physical built environment according to the International Facility Management Association (IFMA)

Our duty is to coordinate between workplace, people and other organizational tasks.

It is a management discipline concerned with the integration of processes within an organization to maintain and develop agreed services which support and improve the effectiveness of its primary activities.

Our scope of work cover main areas such as planning, design, construction, maintenance, furniture and cleaning.

**Client:**

Princess Moudi Bint Khaled Al Saoud

**Location:**

Riyadh - Saudi Arabia

In Saudi Arabia:



## Housing Facilities Jeddah Airport



The Ministry of Housing (MOH) Infrastructure Program will develop the sites and all landscaping and infrastructure, leaving vertical construction to developers.

Jeddah Airport Community include mosques, medical facilities, schools, police stations, parks, landscaped open spaces, commercial/retail development, electrical substations, and sewage treatment plants to provide complete and modern communities attractive to Saudi citizens.

Our team works together to get the job done as quickly as possible without compromising safety or quality. We look forward to continuing in the same manner to achieve program success.

Our scope of work cover the infrastructure works of the project.

**Client:**

Fereseneah Saudi Arabian

**Location:**

Jeddah, Saudi Arabia

## Customers certificates:

ICS is proud to have achieved business with international companies and achieved the best astonishing results.

**Panasonic** **باناسونيك**

**Panasonic Marketing Middle East & Africa FZE**  
P.O. Box 17985, Jebel Ali, Dubai, United Arab Emirates  
Tel : +971 - 4 - 8862142, Fax : +971 - 4 - 8862349  
Website : www.panasonic.com

**باناسونيك الشرق الأوسط وإفريقيا للتسويق م.م. ج**  
ص.ب: ١٧٩٨٥، جبل علي، دبي - الإمارات العربية المتحدة  
هاتف: ٨٨٦٢١٤٢ - ٤ - ٩٧١ +، فاكس: ٨٨٦٢٣٤٩ - ٤ - ٩٧١ +  
الموقع على الشبكة: www.panasonic.com

Date: 1<sup>st</sup> of Nov. 2015

Subject: Civil Defense Project – Saudi Arabia

To the Kind attention of: Ministry Of Interior – Civil Defense

Dear Sirs,

This is to confirm that ICS (International Consulting & Services) is an Authorized Project Partner for the Supply, Installation and Support of Panasonic Fire Alarm, CCTV and PABX Telephony systems that are related to Civil Defense apron project tender submission.

All of the ICS's Company's engineering team is highly trained by Panasonic engineering to ensure the highest quality of installation and handing over of Panasonic above mentioned systems under our direct supervision.

The above letter is valid till the 31<sup>th</sup> of Mar. 2016.

Sincerely Yours

*Yasuo Yamasaki*  
Yasuo Yamasaki  
Director - Division Head  
System Solution & Communications Division  
Panasonic Marketing Middle East and Africa -FZE

**PANASONIC MARKETING  
MIDDLE EAST & AFRICA FZE**  
P.O. Box 17985, Jebel Ali,  
Dubai, United Arab Emirates



لمن يهمة الامر

تفيد شركة ,,المهيدب للمقاولات..... ان شركة انترناشيونال كونسلتنج اند سيرفيس فرع السعودية قد قامت بتنفيذ اشغال البنية التحتية لمشروع .تطوير مدينة تول..... منطقة ..مكة المكرمة..... و شملت اشغال حفر و تمديد و توصيل خطوط الكهرباء و ائارة الشوارع للمشروع بطول خمسة و عشرون كيلو متر طولي .

كما شملت الاعمال تركيب و تمديد الأعمال الالكتروميكانية لثلاثة مباني ضمن المركز الحضري في المشروع ( القاعة متعددة الاستعمالات ، السوق الترانزي و مبنى المطاعم)

بالاضافة لتنفيذ الأعمال الميكانيكية لمحطة رفع الصرف الصحي رقم (3) في منطقة الاسكان التنموي التابعة للمشروع

و قد تم استلام كافة الاشغال بعد إجراء كافة الاختبارات اللازمة لها بنجاح و بحضور ممثل صاحب المشروع و الاستشاري و مهندسي الشركة .

ان شركة .المهيدب للمقاولات..... تقدر لشركة انترناشيونال كونسلتنج اند سيرفيس فرع السعودية الجهود التي بذلتها و تعاونها الدائم و الإيجابي و الجهورية من فنيين و معدات لإنجاز المشروع في الوقت المحدد ووفقا للمواصفات المطلوبة متمنين لهم دوام التوفيق و النجاح .

شركة .....

المدير العام



Date : April 30,2012

To : International consulting and services

P.O Box 87265, Riyadh 11642

Kingdom of Saudi Arabia

Attn : Amer Shaheen

Operation manager

From : TAWATUR EST

P.O 325521 Riyadh 11371

Kingdom of Saudi Arabia

Subject : letter of satisfaction

Greetings,

This letter is to certify that M/s ICS has successfully completed projects for HVAC systems with different capacities for the years 2011 , 2012 . these private projects are located in , Riyadh , and Jeddah ( ongoing ).

ICS were responsible for the process, layout and designs as well as the equipments supply , installation and commissioning.

We, TAWATUR EST FOR TRADING , certify that the above covered projects was completed to our satisfaction within those years..

This certificate was given based on the request of ICS .

Best Regards,

Engr. AYMAN AL SHARIF

Division manager







Dated: 12<sup>th</sup> September, 2011  
Ref: 2011-9-PMP-CERT

To Whom It May Concern,

This is to certify that International Consulting & Services, a construction and engineering management firm with branches in several locations in the Middle East, has been certified by our firm in compliance with:

- **"The initiation, planning, execution, monitoring, and closing of projects"** according to the Project Management Professional (PMP) international standards published and maintained by the Project Management Institute in the United States of America in their Project Management Body Of Knowledge Version 4 (PMBOK-4). This includes:

Requirements definition	Initiating sequence
Project Charter definition	Earned Value Assessment
Project Management Planning	Quality Assurance
Project Schedule	Execution and Communication
Milestones clarification	Project Control
Project Delivery Sequence	Project Closing

- **"The management practices and organizational maturity guidelines"** according to the standard developed and certified by the Capability & Maturity Model for Integration (CMM-I) of Carnegie-Mellon University's SEI.

The internal organizational practices and procedures are covered under the above mentioned scopes. This letter has been issued upon the request of International Consulting & Services.

Best Regards,

Hany Atchan, Ph.D., PMP  
Managing Principal – Rosekay Systems KSA  
hatchan@rosekaysystems.com



USA Office: 4848 Noor Drive, Dublin, OH, 43016, USA [www.rosekaysystems.com](http://www.rosekaysystems.com) USA Office 614-5929617

Drake & Scull  
KSA

Date : 02/06/2015

**To Whom It May Concern**

This is to certify that "International consulting and services Saudi Arabia Branch." Is successful working (Electrical works) at:

**King Abdullah Petroleum Studies and Research Center (KAPSARC) - (RIYADH)**

ICS scope of work included the process of installation & commissioning for lightening system in all building as international and ARAMCO standard.

We (Drake & Scull international), confirm that the implementation & execution of the above project is up to KAPSARC team level of expectation.

This recommendation was given based on ICS request and without any liability on (Drake & Scull international).

Drake & Scull international Saudi Co.

Mohamed Hassan  
Project Manager - Electrical

Drake & Scull International Saudi Co.  
P.O. Box 15130 Riyadh 11444 - KSA Tel: +966 11 291 5390 Fax: +966 11 291 8052  
[www.drakescull.com](http://www.drakescull.com)

Commercial Registry No: 1010083181 Capital SAR 2 000 000

A Drake & Scull International PJSC Company



تاريخ : 21/9/2012

مرجعنا : 011UCSKUST

### To whom it may concern

This is to certify that "International consulting and services Saudi Arabia Branch." Has successfully completed (Electro Mechanical works ) at PRINCESS NOURA BIN ABDULRAHMAN University (PNU) - ( RIYADH )

ICS scope of work included the process layout & design, as well as equipment supplying, installation & commissioning for security buildings and Mosques.

We (Delta Electro Mechanic Ltd ), confirm that the implementation & execution of the above project was up to PNU team level of expectation.

This recommendation was given based on ICS request and without any liability on (Delta Electro Mechanical LTD ).

Delta Electro Mechanic Ltd

ELIAS SARROUF

General Manager



بسم الله الرحمن الرحيم

لمن يهمه الأمر

نفيد نحن شركة دار المنيو لمنتجات الألمنيوم المحدودة / دالبكو، بأن شركة انترناشيونال كونسلتنغ أند سيرفيز تعتبر من الوكلاء المعتمدين لدينا في توريد وتركيب كافة المنتجات التابعة لمصنعنا والتي تشمل :-

1- أعمال الألمنيوم و الواجهات الزجاجية.

2- كافة أعمال الحديد ذو التصاميم الخاصة و المميزة.

ولهم القدرة الكاملة على تنفيذ كافة أعمال المشاريع.

وهذه إقادة منا بذلك



شركة دار المنيو

لمنتجات الألمنيوم المحدودة / دالبكو

10/05/2012 :Date

**TO WHOM IT MAY CONCERN**

Subject: HVAC AND FIRE FIGHTING WORK S IN AL FARES TOWER

This is to certify that M/s INTERNATIONAL CONSULTING AND SERVICES (ICS) has successfully completed all HVAC and Fire Fighting Systems in Al FARES TOWER CORNICH- JEDDAH

ICS were responsible for the process design and calculation, equipment supply , installation, testing and hand over.

We ACN certify that the above mentioned project was completed up to our satisfaction and within the required parameters.

This certificate was given based on the request of ICS without any liability



م.س.س  
2012/05/10

بريد الإلكتروني: [acn\\_saudi@gmail.com](mailto:acn_saudi@gmail.com) - الرياض - المملكة العربية السعودية

15 FEB 2020

**TO WHOM IT MAY CONCERN**

M/s International Consulting & Services has worked with Salini Saudi Arabia as Mechanical, Electrical, & Plumbing contractor for Al Faisaliah Redevelopment Project Phase 1 in Riyadh.

We found them to be knowledgeable and cooperative during the course of the refurbishment works of the Faisaliah Mall and in addressing any matter related to its scope of works.

In fact, it was a pleasure working with their team and we would be pleased to recommend them as MEP contractor for any well reputed main contractor.

**Tarek El Zahabi**  
Construction Director  
Al Faisaliah Redevelopment Project  
Salini Saudi Arabia Co. LTD





Al Rifai Roastery s.a.l

بيروت في 31-10-2010

### لمن يهمه الامر

نفيد عن ، شركة محصنة الرفاعي ش.م.ل ، أن شركة أنترناشيونال كونسلتنغ أند سيرفيس ش.م.م قد قامت بتصميم وانشاء معامل و محترات لشركة محصنة الرفاعي المدرجة تحت الصناعات الغذائية في بيروت .  
و قد تم التنفيذ وفقا لإرشادات و تعليمات المهندسين الاستشاريين و مكتب مراقبة الجودة و النوعية ووفقا لشروط شروط السلامة الموضوعية من قبل المراجع المختصة لسلامة الصناعات الغذائية و وفقا لاحداث المعايير الامريكية و الاوروبية .  
و نحن بدورنا نشكر شركة أنترناشيونال كونسلتنغ أند سيرفيس ش.م.م على حسن تنفيذ الاعمال الموكلة لها ووفقا للحدود الزمني المنفق عليه كما نشكر فريق العمل من مهندسين و اداريين و تقنيين على حسن تعاونهم مع كافة أفرقاء المشروع .  
اعطيت هذه الافادة بناء على طلب شركة أنترناشيونال كونسلتنغ أند سيرفيس ش.م.م دون اي مسؤولية من قبلنا .

وتفضلوا بقبول فائق الاحترام

شركة محصنة الرفاعي ش.م.ل  
AL Rifa'i  
المدير المالي التنفيذي (CFO)

Cornich Al Maaraa, Al-Rifai Bldg, P.O.Box 155105 Beirut - Lebanon  
Phone: +961(1) 707107, 705105, 7022201 - Fax: +961(1) 308311, 309690  
http://alrifai.com, www.alrifai.com

AL-OHADIEH CO.  
For Contracting  
Trading & Industries Ltd.  
Capital : 1,850,000 S.R.  
C.R. 1010076961



الشركة الأحادية  
للمقاولات  
والتجارة والصناعة المحدودة  
رأس المال: ١.٨٥٠.٠٠٠  
س.ت: ١٠١٠٠٧٦٩٦١

## شهادة إنجاز أعمال

إلى من يهمه الأمر.....

تشهد الشركة الأحادية للتجارة و المقاولات بأن السادة / شركة إنترناشيونال كونسلتنغ أند سيرفيس (ICS) معتمدة لدينا كمقاول من الباطن في مجال التهوية و التكييف و مكافحة الحريق و قد أوفت الشركة بالتزاماتها التعاقدية على أكمل وجه في تنفيذ مشروع فلل الأمير متعب بن عبد الله (حفظه الله) في الروضة - الرياض. و قد تضمن مجال عمل الشركة ما يلي :

- 1- إعداد الدراسات و التصاميم و الخرائط التنفيذية.
- 2- توريد و تركيب وحدات التكييف و مكافحة الحريق.
- 3- أعمال التجارب و بدء التشغيل و التسليم الإبتدائي و النهائي.

و قد أعطيت هذه الافادة تقديراً من شركتنا لحسن التنفيذ و تنويهاً بقدرات الشركة الفنية و التقنية و التجهيزية.

الشركة الأحادية للتجارة و المقاولات



الرياض - هاتف : ٢٧٩٠١١١ / ٢٧٩١٢٣٧ - ٠١ - فاكس : ٢٧٩١١٠٠ - ص.ب ٩٦٢٥ الرياض ١١٤٢٣ المملكة العربية السعودية  
Riyadh - Tel.: 01- 2790111 / 2791327 - Fax: 01- 2791100 - P.O.Box 9625 Riyadh 11423 Kingdom of Saudi Arabia



# CERTIFICATE

This is to hereby confirm that

**M/s. INTERNATIONAL CONSULTING & SERVICES**

Building No. 3540, 1<sup>st</sup> floor, office No. 17

Prince Sultan Bin Abdulaziz street, Al Sulaymaniyah District

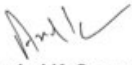
Riyadh – Saudi Arabia

P.O.Box 12223 Riyadh 7666 Saudi Arabia

is authorised as **"Sauter Solutions Partner / Distributor"** of Sauter Middle East for the sale and technical support of our complete line of products for Controls and Building Management Systems in, **KSA**.

We at **Sauter Middle East** are fully committed to support **M/s. INTERNATIONAL CONSULTING & SERVICES** in their efforts in the project assigned to them.

For Sauter Middle East FZC.  
P.O. Box - 122353, SAIF Zone, Sharjah-UAE

  
**Arvind K. Swarnkar**  
Managing Director



## Project List

Project Name	Scope of Work	Client	Location	Status
Digital city	MEP	Darke & Scull	Riyadh	Completed
King Saud University	Electrical works	Darke & Scull	Riyadh	Completed
King Abdallah Petroleum Research Center	MEP	Darke & Scull	Riyadh	Completed
Kingdom Tower project	MEP	Square Design Est.	Riyadh	Completed
Princess Noura University phase 2	MEP	Delta Electro - Mechanical Co.	Riyadh	Completed
Princess Noura University phase 1	BMS	First Gulf Construction Co.	Riyadh	Completed
National Guard - Salbokh	MEP	Saudi Oger Co.	Riyadh	Completed
Private Villa	MEP	Saudi Oger Co.	Riyadh	Completed
Ministry of Finance	Finishing works	Saudi Oger Co.	Riyadh	Completed
Private Villa	Construction works	Solidere International Co.	Riyadh	Completed
Private Villa	MEP	Khayrat Al Khaleej Co.	Riyadh	Completed
Riyadh Edafa project	Facility Management	Riyadh Edafa Co.	Riyadh	Completed
Technical Institute - Al-Ahsa	MEP	YMCO Co.	Al-Ahsa	Completed
Al Baik Food factory project	MEP	YMCO Co.	Jeddah	Completed
Technical Institute Hotel - Taif	Plumbing	YMCO Co.	Taif	Completed
Boeing Training Center	MEP	YMCO Co.	Riyadh	Completed
Tuwal city project	Infrastructure + MEP	Al Mouhaideb Company for Contracting - M6	Jeddah	Completed



## Project List

Project Name	Scope of Work	Client	Location	Status
King Abdallah Sports city - Al Jawharah	MEP	Al Mouhaidab Company for Contracting - M6	Jeddah	Completed
Al Fayhaa printing press project	MEP	CAP France Pat Co.	Jeddah	Completed
NUMU project	MEP	Fadi Chatila Est. for decoration	Riyadh	Completed
Halow Showroom project	MEP	Fadi Chatila Est. for decoration	Riyadh	Completed
Halow warehouse project	HVAC	Fadi Chatila Est. for decoration	Riyadh	Completed
Othaim palace project	MEP	Fadi Chatila Est. for decoration	Riyadh	Completed
Lulu mall	MEP	Mase gulf company	AL Hafouf	Completed
Attayar factory	MEP	Mase gulf company	Jeddah	Completed
Al Marai sales warehouse	Fire Fighting	Amana Saudi contracting company	Jeddah	Completed
National Guard Mobile Hospital	MEP	SACE Est.	Riyadh	Completed
Jeddah Airport Housing	Infrastructure works	Freyssinet Saudi Arabia	Jeddah	Completed
Private palace	Facility Management	Confidential	Riyadh	Completed
Al Fawzan Warehouse	MEP + Finishing works	LSC company	Riyadh	Completed
Airbus Warehouse project	MEP	LSC company	Riyadh	Completed
Dr. Abdallah Al Namlah Villa	MEP	Amnesty group	Riyadh	Completed
Rose Sweets factories	Turnkey Project	Rose Sweets Est.	Jeddah	Completed
Rose Sweets factory	Turnkey Project	Rose Sweets Est.	Riyadh	Completed
Hilti showroom	MEP	New coast company	Jeddah	Completed
King Abdulaziz Digital Museum	MEP	Modelcraft company	Riyadh	Completed

## Project List

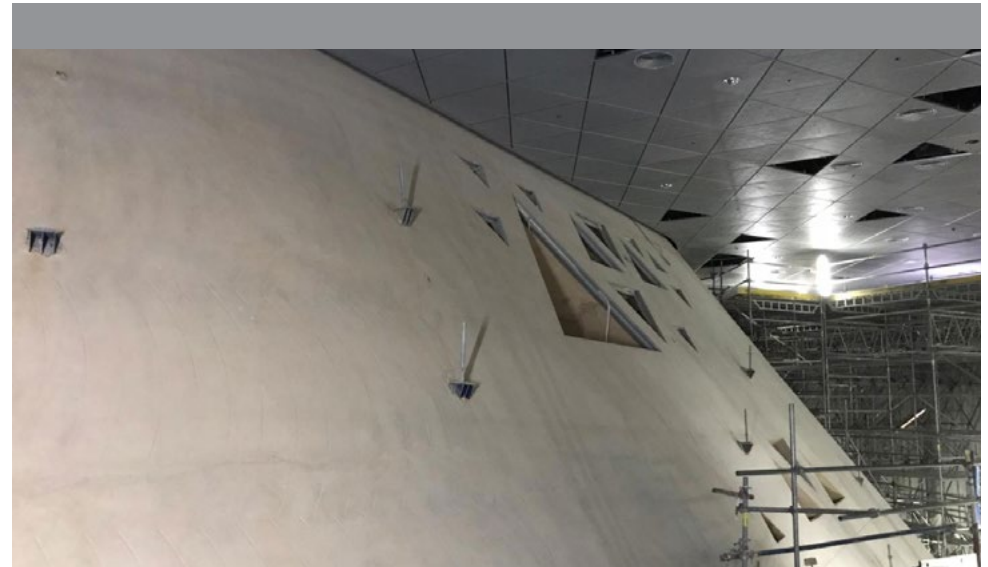
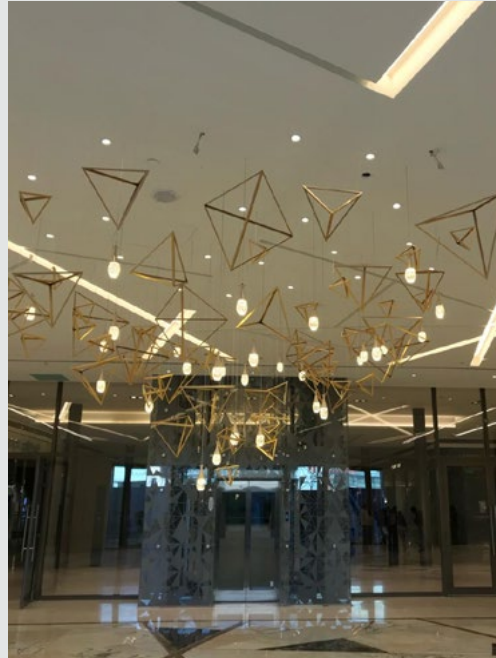
Project Name	Scope of Work	Client	Location	Status
Faisaliyah mall refurbishment - Stage 1	MEP + Finishing	Salini Saudi Arabia	Riyadh	Completed
King Abdallah Financial District	MEP	Salini Saudi Arabia	Riyadh	Completed
American School	Gas Network	Abu Nayyan company	Jeddah	Completed
Rosa farm	MEP	First fix company	Riyadh	Completed
Wagyu restaurant	MEP	Arshi zoon for contracting Est.	Riyadh	Completed
Al Khozam farm	Facility Management	Private palace	Riyadh	Completed
Faisaliyah Tower	Civil & construction works	Al Khozama for management	Riyadh	Completed
National Water Company	MEP	Saudi Tumpane company	Riyadh	Completed
Private palace	MEP	Al Qasr for development & commercial investment company	Riyadh	Completed
King Abdallah Financial District - Two Towers 407 & 408	MEP	NAFCO	Riyadh	Completed
Saudi Royal Air Forces - DOSC	Turnkey Project	Elettronica - Italy	Jeddah	Completed
Royal Saudi Air Forces Technical Center	Turnkey Project	Elettronica - Italy	Riyadh	Completed
Ministry of Health - Crisis center - Digital city	MEP + Finishing works	Saudi Consolidated Engineering Co. Khatib & Alami	Riyadh	Completed
Riyadh Metro - Line 3 - 3E2 - Qasr El Hokom Central station	Finishing works	ArRiyadh New Mobility - ANM	Riyadh	Ongoing
Riyadh Metro - Line 3 - 3A1 station - Roads & Infrastructure works	Infrastructure works	ArRiyadh New Mobility - ANM	Riyadh	Ongoing
Riyadh Metro - Line 3- 3K1 station - Park & ride project	MEP	ArRiyadh New Mobility - ANM	Riyadh	Ongoing
King Salman Air Base - Ministry of Defense	MEP	BSS	Riyadh	Ongoing
Riyadh Metro - Line 3 - Testing & maintenance for underground services (21 stations - 40 KM)	Facility Management	ANM	Riyadh	Ongoing



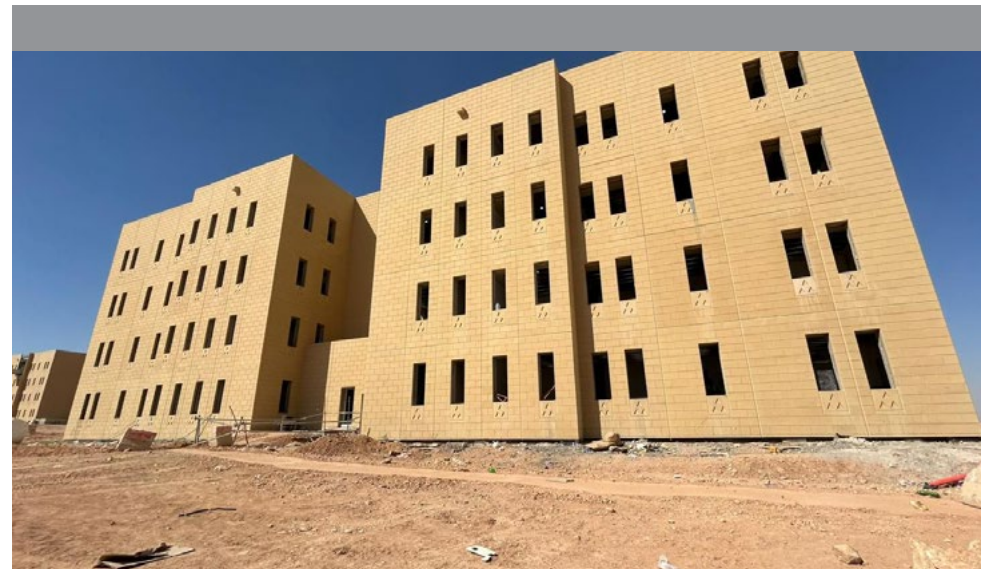








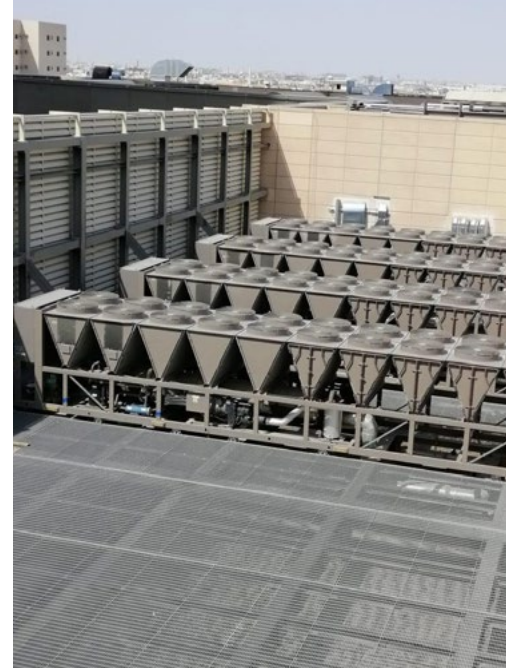












delivering quality is non-negotiable

📍 Eyes World Bldg. 2nd Floor Office No. 9  
Prince Mohammed Bin Abdul-Aziz Street – Tahliah  
Riyadh – Saudi Arabia  
P.O.Box 87265 Riyadh 11642 Saudi Arabia

☎ Tel: 00966112932300  
Fax: 00966112932300 Ext. 105

✉ Info@icsmena.com  
🌐 www.icsmena.com

